



DB SCHENKER *smartbox*
ECITL 2010 Bremen

EUROPEAN CONFERENCE ON
RD **ICT**
4 TRANSPORT LOGISTICS ←←

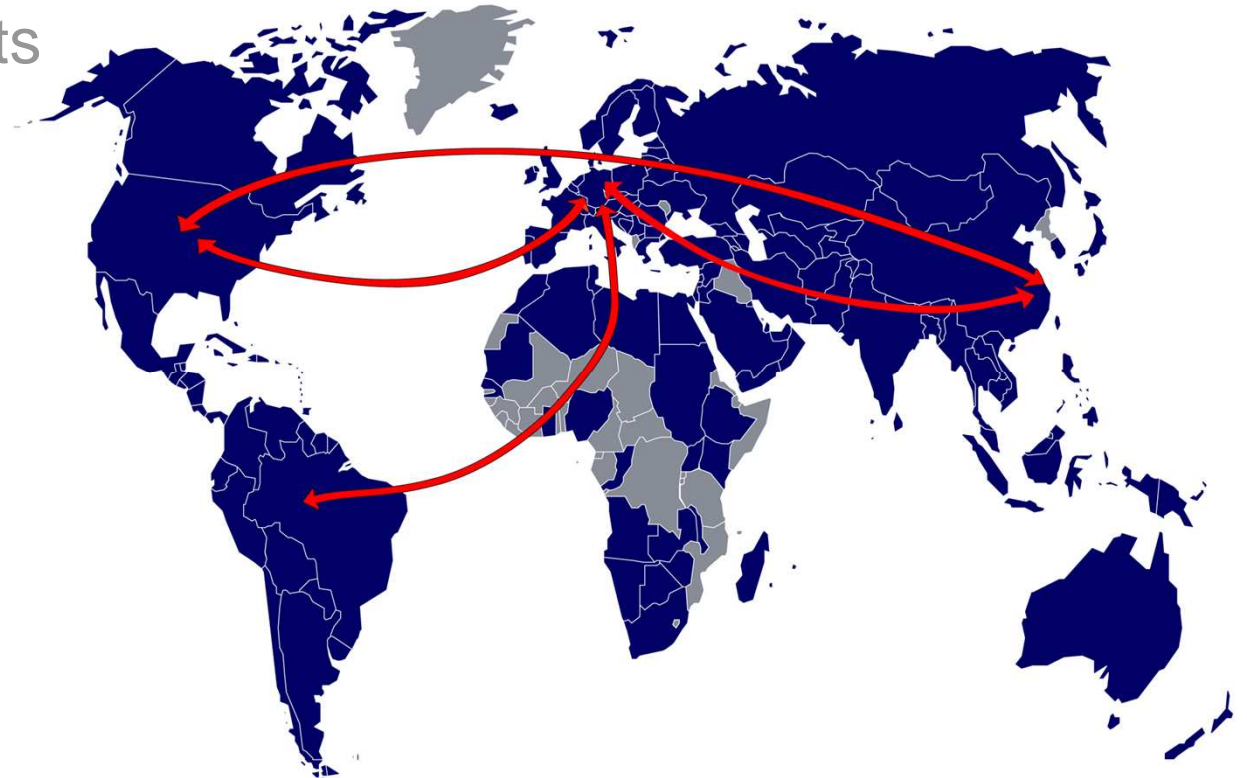
Corp. Product Management Ocean Freight

Christopher Regenhardt

Schenker AG, Head Office

Bremen, November 2010

- Product description
- Web Application
- Sample Customer Reports
- Facts and Benefits



DB Schenker Logistics is a leading provider of international transport and logistics services



DB Schenker Logistics



Integrated transport and logistics services

- Operation of **global networks**
- **Expertise in specific industries**, e.g. automotive, electronics, consumer goods
- Strong brand with global **door-to-door service**

DB Schenker Logistics Service Portfolio



No. 1 in European Land transport

- 800 offices in 36 countries
- 70 million consignments p.a.
- approx. 32,000 regular services per week



No. 2 in global Air Freight

- More than 700 sites worldwide
- 800 freight flights p.a.
- 1 million tons airfreight volume p.a.



No. 3 in global Ocean Freight

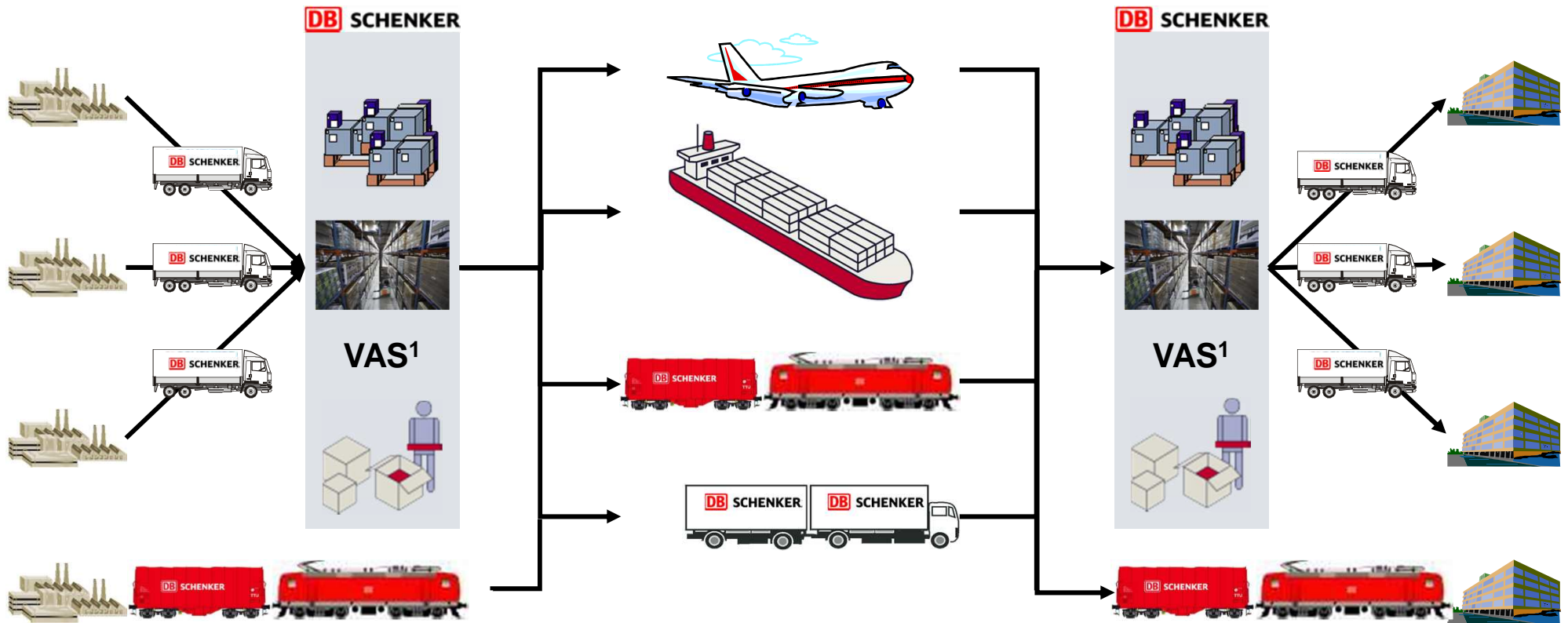
- 1.4 million TEU¹ ocean freight volume p.a.



No. 5 in global Contract Logistics

- 500 offices in more than 50 countries
- More than 4 million m² warehousing space

Delivering Solutions - DB Schenker offers customers integrated logistics chains from a single source



Door-to-door solutions, tracking

Supply chain management

Key account management

¹ Value added services
DB Schenker, Christopher Regenhardt

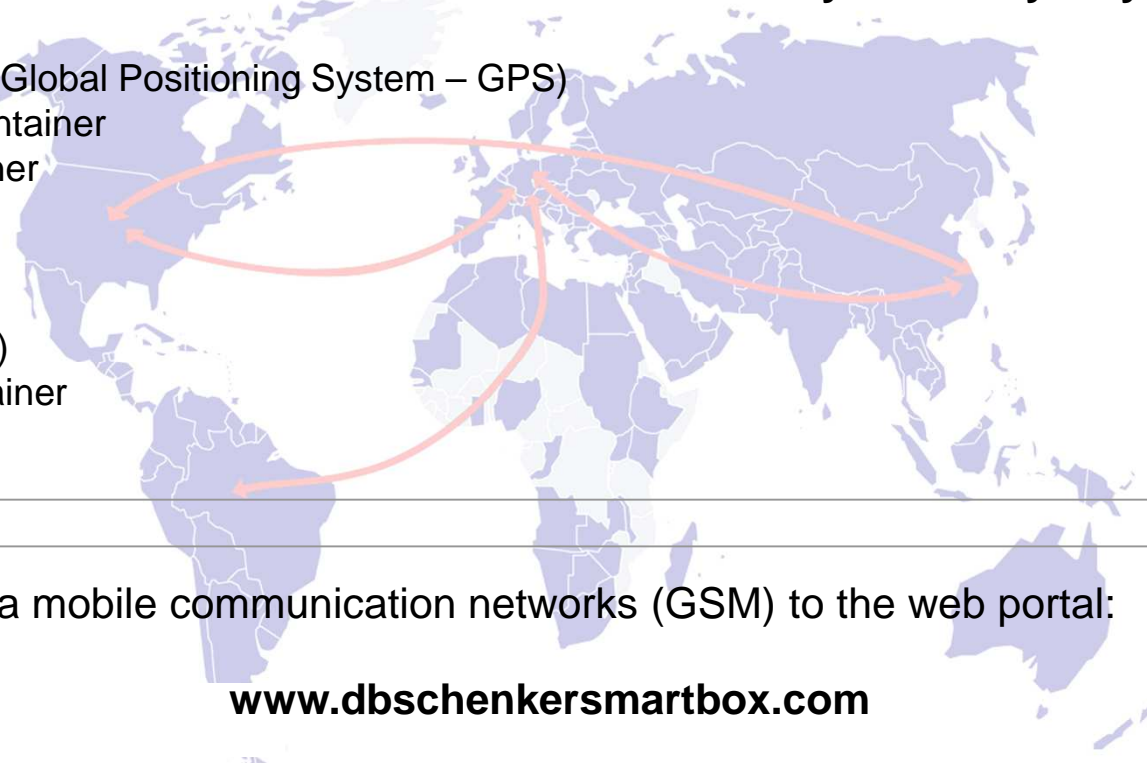
DB SCHENKER *smartbox*

Product description



■ The following parameters are monitored by DB SCHENKER *smartbox* –
worldwide – 24 hours a day – 365 days a year:

- Geographical position (via Global Positioning System – GPS)
- Temperature inside the container
- Humidity inside the container
- Light influx
- Tilt level
- G-force impact
- Door status (open - closed)
- Movement inside the container



■ The collected data are transmitted via mobile communication networks (GSM) to the web portal:

www.dbschenkersmartbox.com

DB SCHENKER *smartbox*

Product description



Further related services and features are:

- Reverse Logistics of device via air freight (worldwide network)
- Consulting and Business Case analysis
- Customized reports and statistics
- System accessible via **Customer Information System**
- Marketing support and press announcements
- Optional security center solution







DB SCHENKER *marineparts* Reverse Logistics



*** Hubs**

+150 locations worldwide

DB SCHENKER *smartbox* Evaluated Technologies

		Tracking	Visibility	Monitoring and Detection	
Passive RFID and reader		✓	✗	✗	Checkpoint based ■
E-Seal		(✓)	✗	✓	
Active RFID + Door sensor		✓	(✓)	(✓)	
GPS sensor suite DB SCHENKER <i>smartbox</i>		✓	✓	✓	* Worldwide ■

✓ possible
 (✓) limited functionality
 ✗ not possible

* Depending on coverage of mobile and/or satellite network

DB SCHENKER *smartbox* Device evolution

Initial Prototypes
2001-2003



- Solar cells
- Separate inside and outside

Generation **CMD410**
2004-2005



- 4 parts (Module, Battery, Antenna, Door magnet)
- Cables required
- Tested in "Operations Safe Commerce"

Generation **CMD420**
2006-2009



- Quick setup
- Cables visible, but not in the way
- Just 2 parts (separate door magnet required)
- Light weight
- Small size

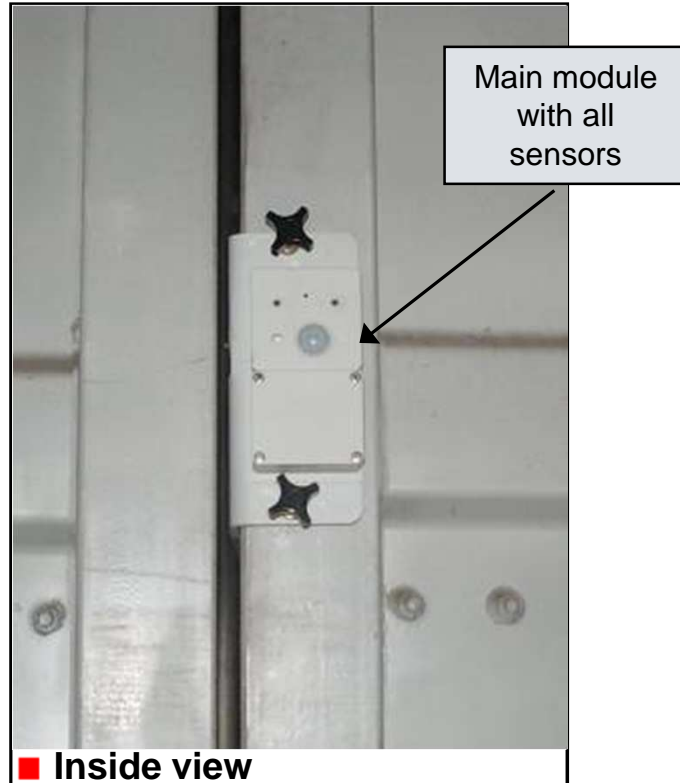
Generation **CMD500**
Launch Q4/2009



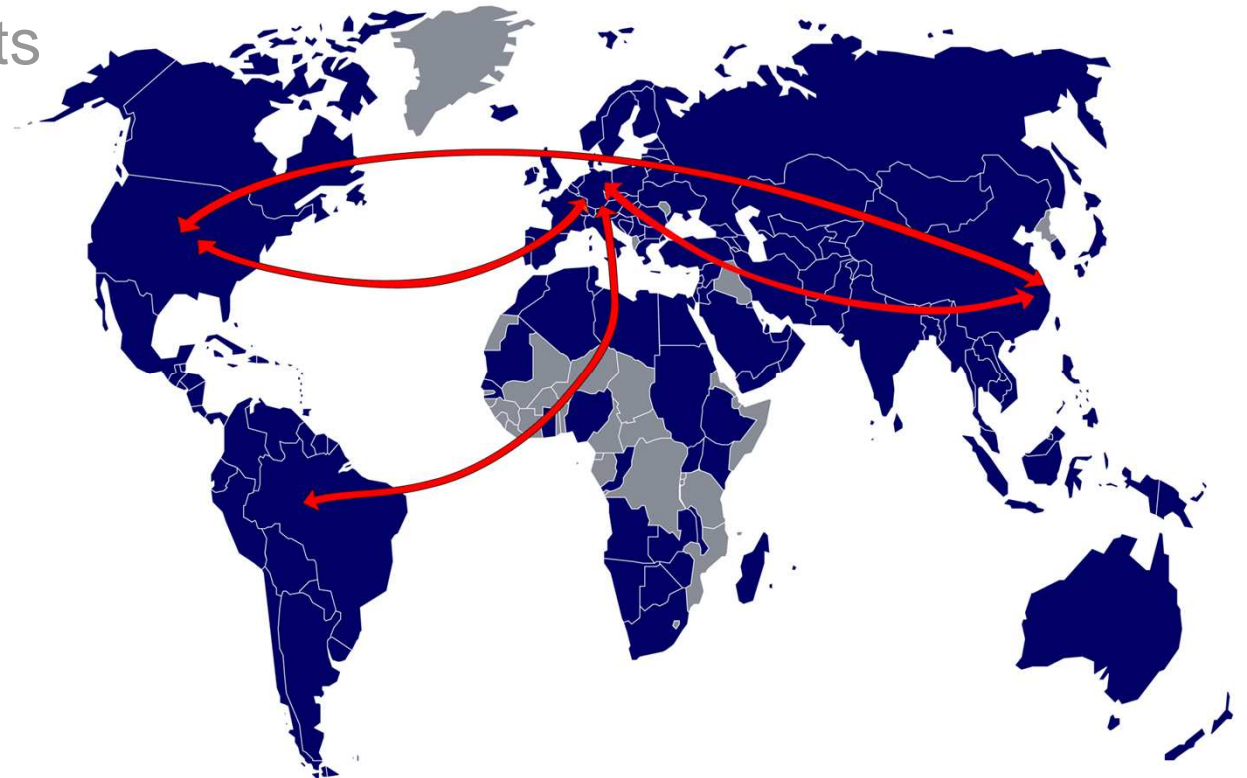
- **No visible cables**
- Just **one part**
- Extremely **quick** setup
- Extremely **light** weight
- Extremely **small** size
- **High functionality** based on 4-year joint DB SCHENKER *smartbox* experience

DB SCHENKER *smartbox*

The current device generation



- Product description
- Web Application
- Sample Customer Reports
- Facts and Benefits



DB SCHENKER *smartbox* Customer Information System (CIS)



CUSTOMER INFORMATION SYSTEM

My Schenker Price Request **CIS2** Tracking Scheduling Other Services Information Contact

Selection Container-Dispo Event-Entry NC-Entry EMM E-Notification Reports Settings Monitoring Help Demo Feedback About

1 of 2

Shipment Details LESS

Project ID: XXSITT
STT Number: 27658502201394
AWB/BL-No.: 0634201002739NU
Carrier (M)AWB/(M)BL: OBL658502215438
Flight/Vessel: APL FINLAND

Transport Mode: SEA
Place of Loading: DEHAM HAMBURG
Port of Departure: DEHAM HAMBURG
Port of Destination: CNSHA SHANGHAI
Place of Delivery: CNSHA SHANGHAI
Shipper: DAHLE BUEROTECHNIK GMBH, NIKOLAUS-A.-OTTO-STR. 11, 96472 ROEDENTAL, AN
Consignee: NOVUS OFFICE PRODUCTS (CHUZHOU) CO., LTD., 78 LINGXI ROAD, 239064 CHUZHOU AN

Nature of goods: R...
Service Level: ...
Estimated Time of DEP: 05...
Estimated Time of ARV: 06-30-2009 00:00:00
Number of Pieces: 1
Gross Weight: 1215.0 KGM
Net Weight: ...
Incoterms: DDU delivered duty unpaid
Dangerous Goods: NO
Charges total collect: 0.0
Charges total prepaid: 0.0
Schenker Internal Flatfile: BL Flatfile

Container/Trailer LESS

Container/Trailer	Type	ULD	ULD Capacity	F/E	Mve	Seal No.	Gross Weight	Unit	MVT/Plan	Volume
HAMU 2007610	CH	20'	Type: DC 5			325201	1215.0 KGM	FCL/LCL		13.142

Milestones in local time | **Milestones in GMT** MORE

PKD	BKD	DEP	ARV	CCD	DLV
05-26-2009 07:00:00 DEHAM	05-20-2009 14:27:00 DEHAM	05-31-2009 14:14:00 DEHAM			

With a single click within the Customer Information System you will be able to access www.dbschenkersmartbox.com

DB SCHENKER *smartbox* Customer Information System (CIS)



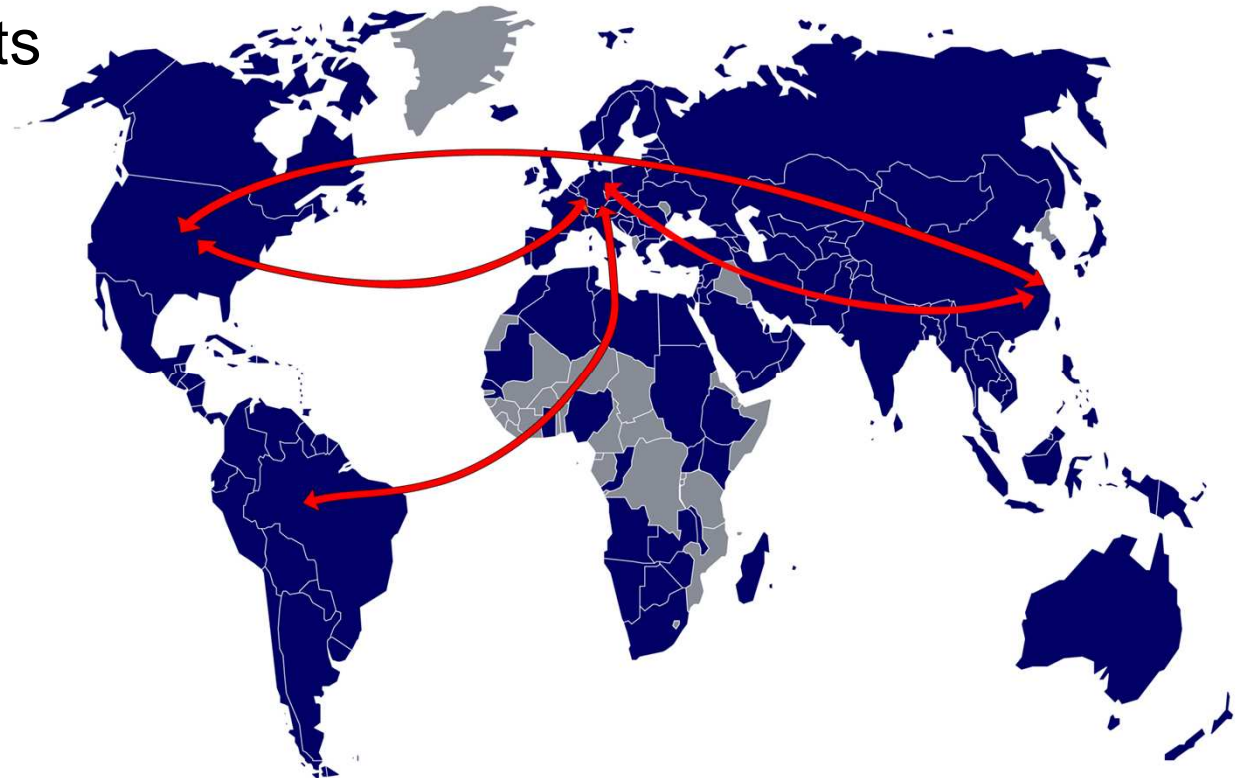
24 hours / 7 days a week

Container	353358014840867
Description	CTR 14_PONU4957212_500-R-1001-0010
TRIP	Name: Trip2 Date: from 19.02.2010 19:24:29 to Current time (UTC)
Coordinates	53.5979.N x 8.51722.E
Accuracy	44m
Location (town.country.distance)	n/a
Temperature	4.4°C
Humidity	55.9%
Battery state	94%
Last communication time	02.03.2010 10:09:51 (UTC)

Security Parameters	Device Parameters
Door Closed	Active
No Movement Inside	GPRS Network Available
No Light	Normal Power
Inside Geo-Zone	Mounted
Environmental Parameters	Accelerometer Parameters
Temperature Normal	No Impact
Humidity Normal	No Vibration
GPS Normal	No Tilt



- Product description
- Web Application
- Sample Customer Reports
- Facts and Benefits



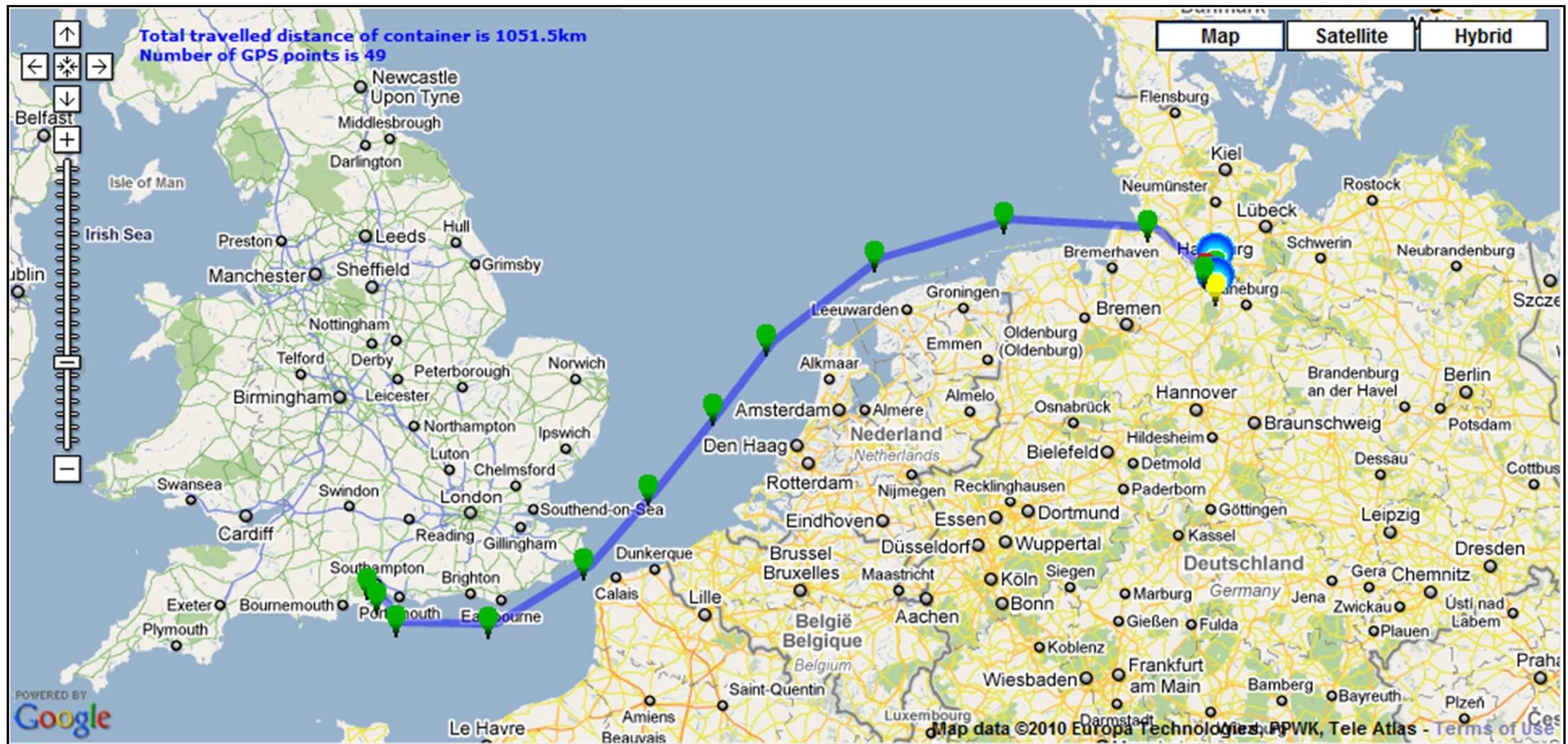
GPS map of SXXJ0004200 status (Status on Sept 25th)



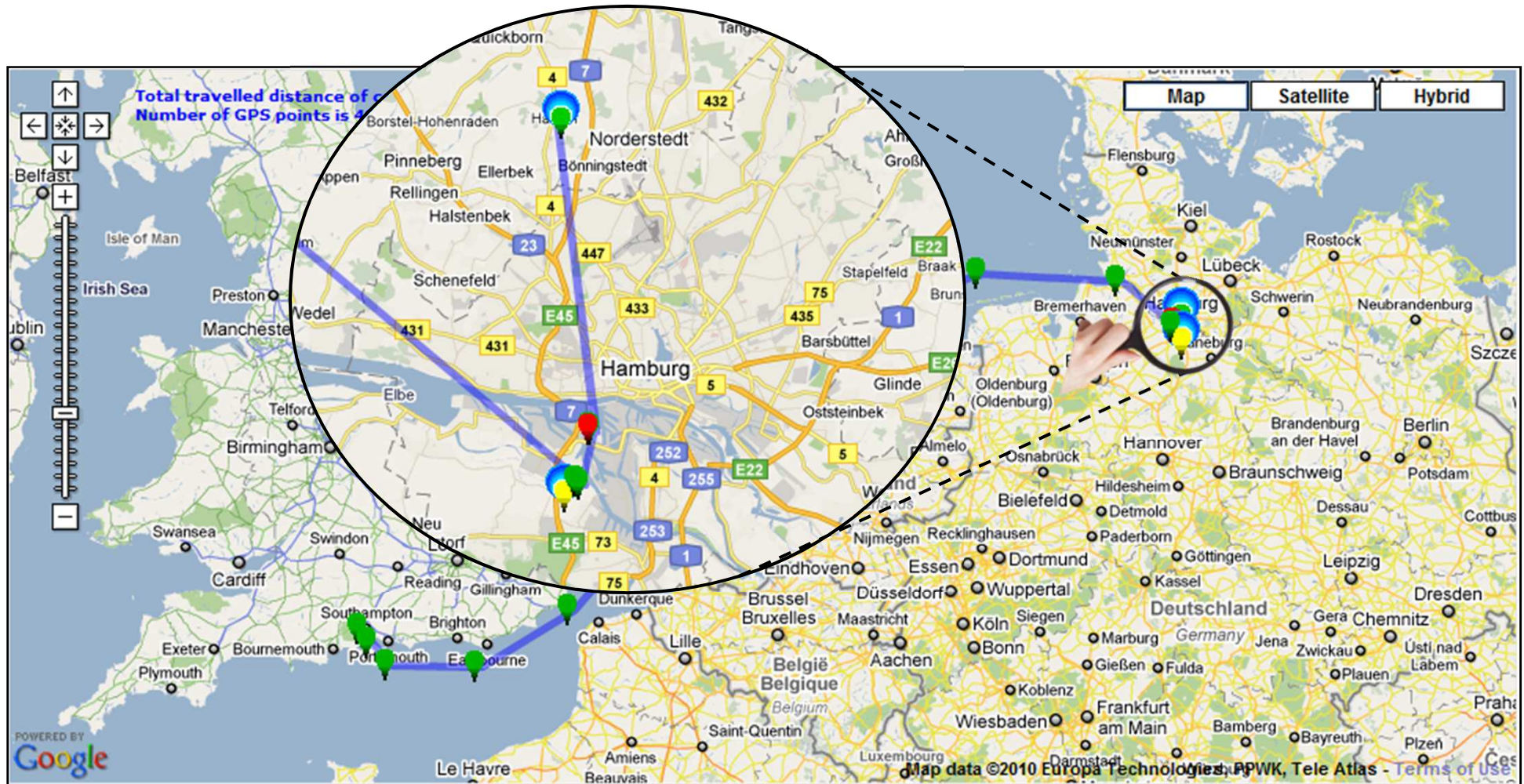
GPS: Route / Map | History: Events / Temperature / Humidity / Tilt / GForce / Vibration | Module params

Container	011691001152324	Security Parameters	Device Parameters
Description	NYKU8465472	Door Closed	Active
TRIP	Name: Trip1	No Movement Inside	GPS Network Available
	Date: from 24.05.2010 12:57:35 to Current time (UTC)	No Light	Normal Power
Coordinates	50.5859,N x 1.05243,W	Inside Sea Zone	Mounted
Accuracy	31m	Environmental Parameters	Accelerometer Parameters
Location (town,country,distance)	Sandown, United Kingdom, 9.90854km	Temperature Normal	No Impact
Temperature	10.2°C	Humidity Normal	No Vibration
Humidity	84%	GPS Normal	No Tilt
Battery state	94%		
Last communication time	25.09.2010 07:27:55 (UTC)		

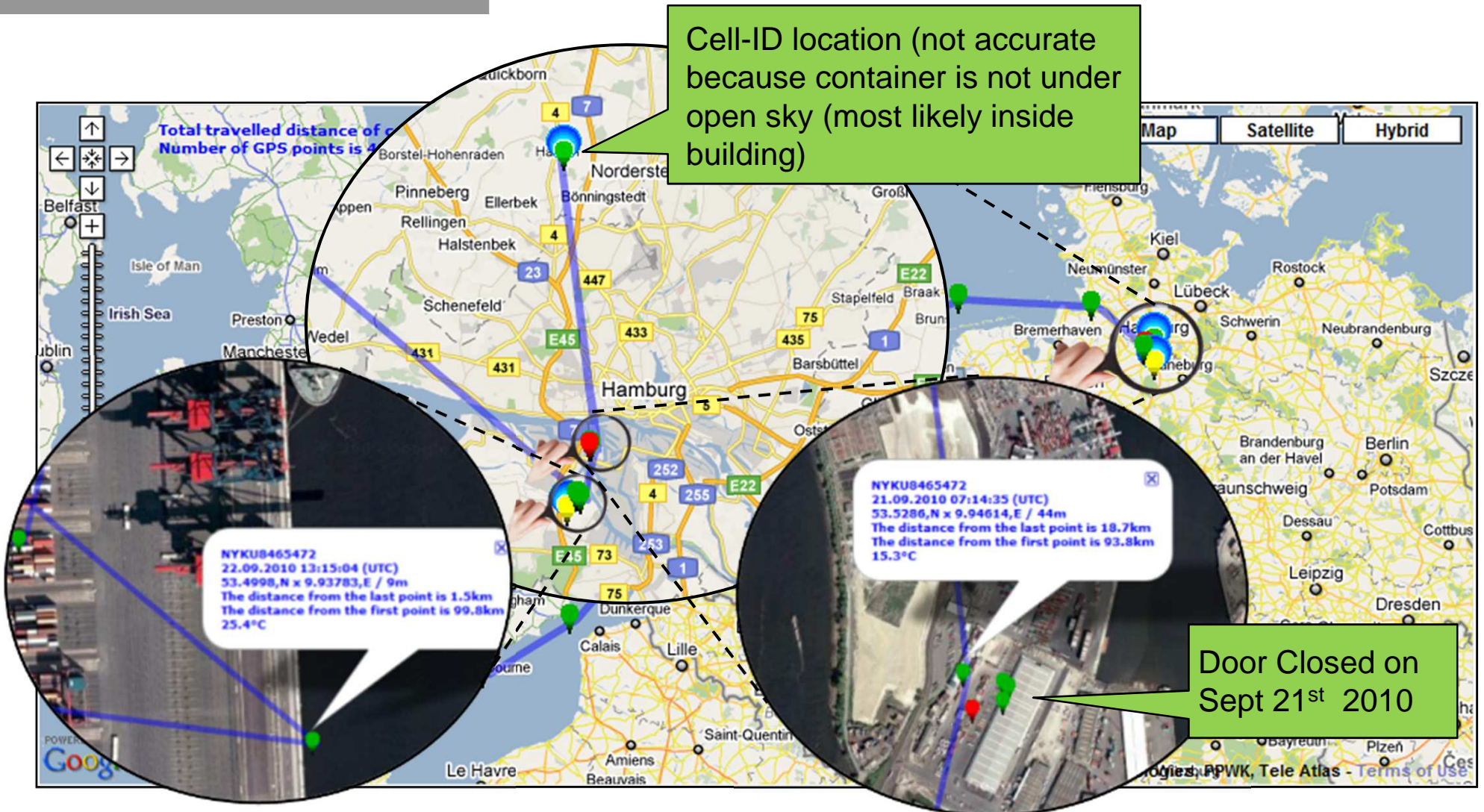
GPS route of SXXJ0004200 (1/5)



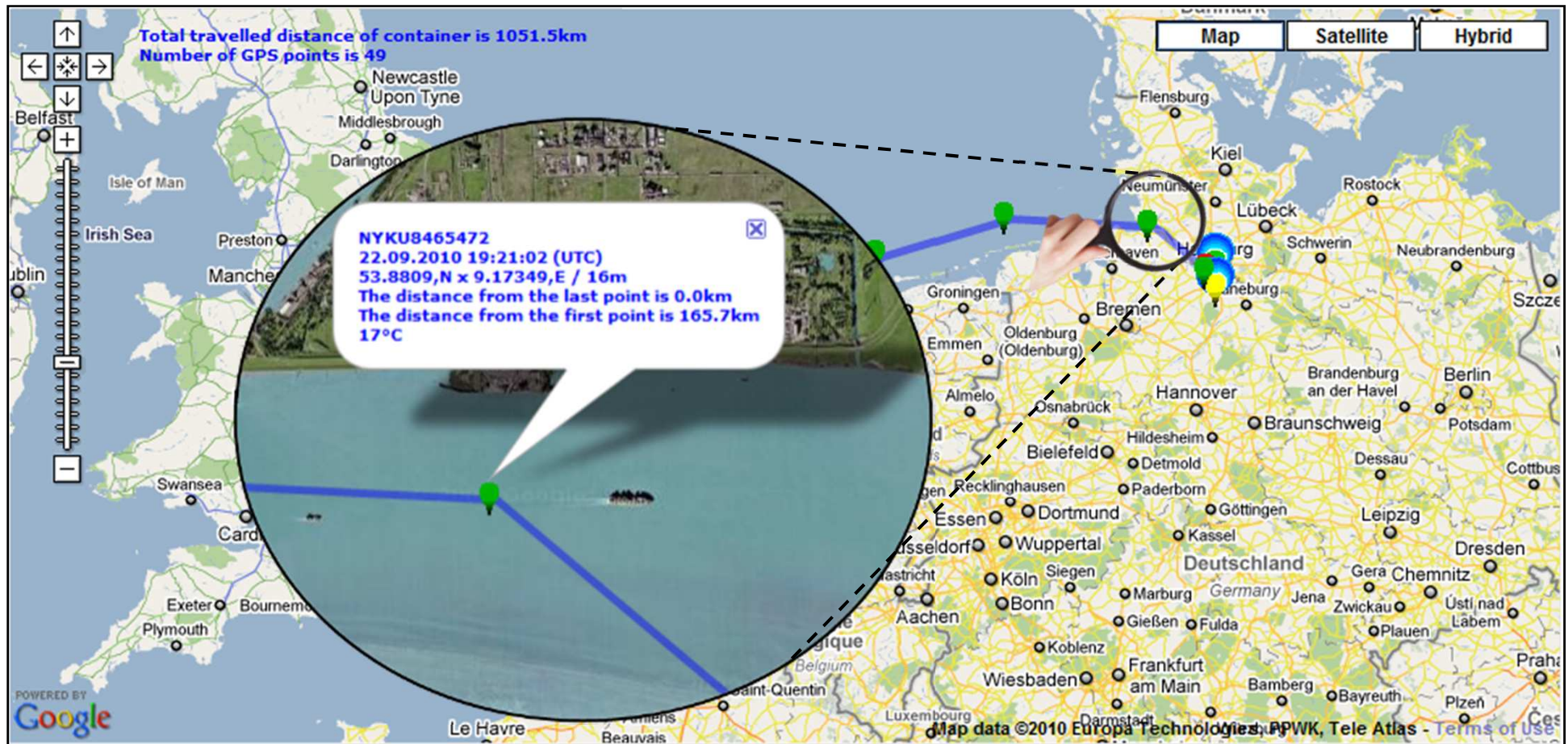
GPS route of SXXJ0004200 (2/5)



GPS route of SXXJ0004200 (3/5)



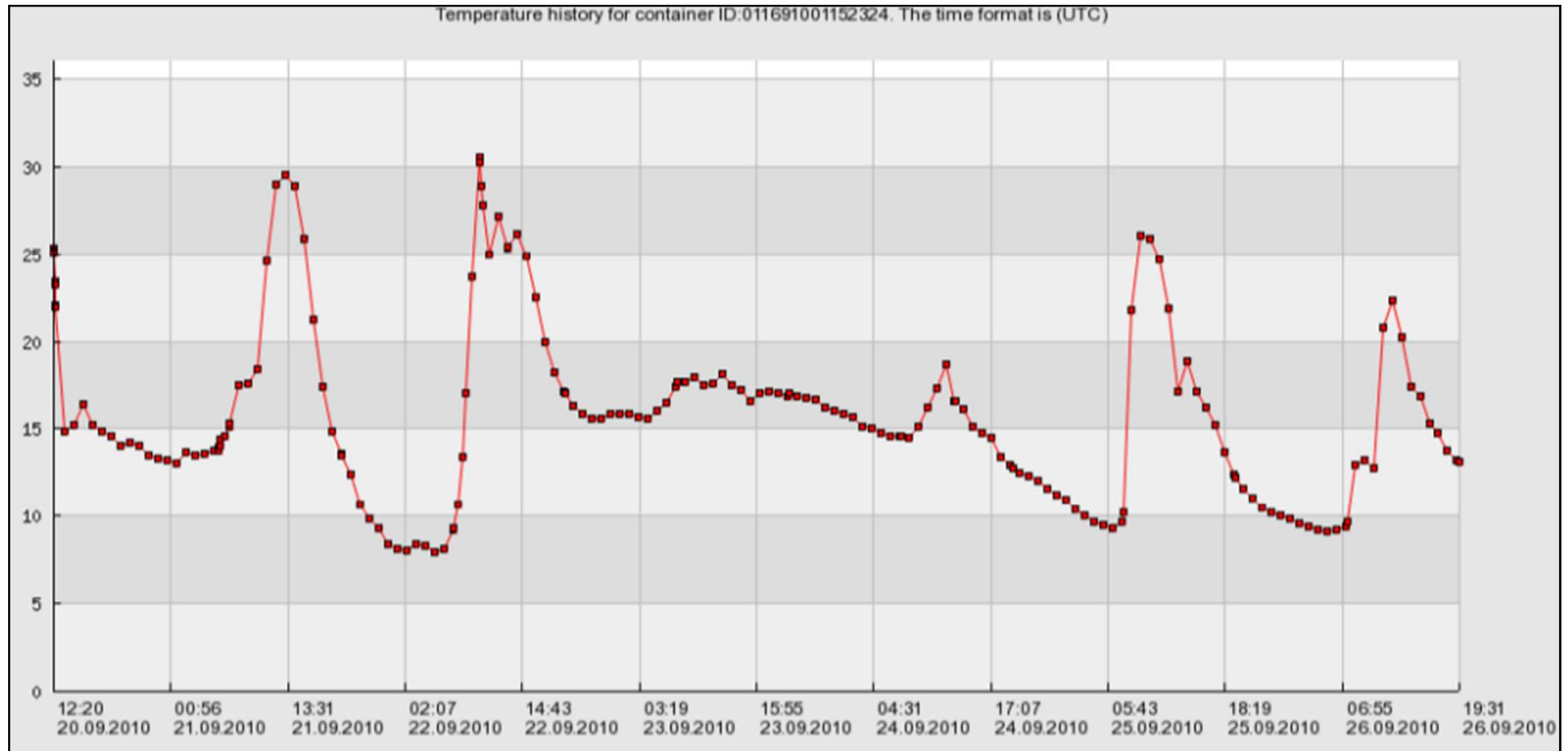
GPS route of SXXJ0004200 (4/5)



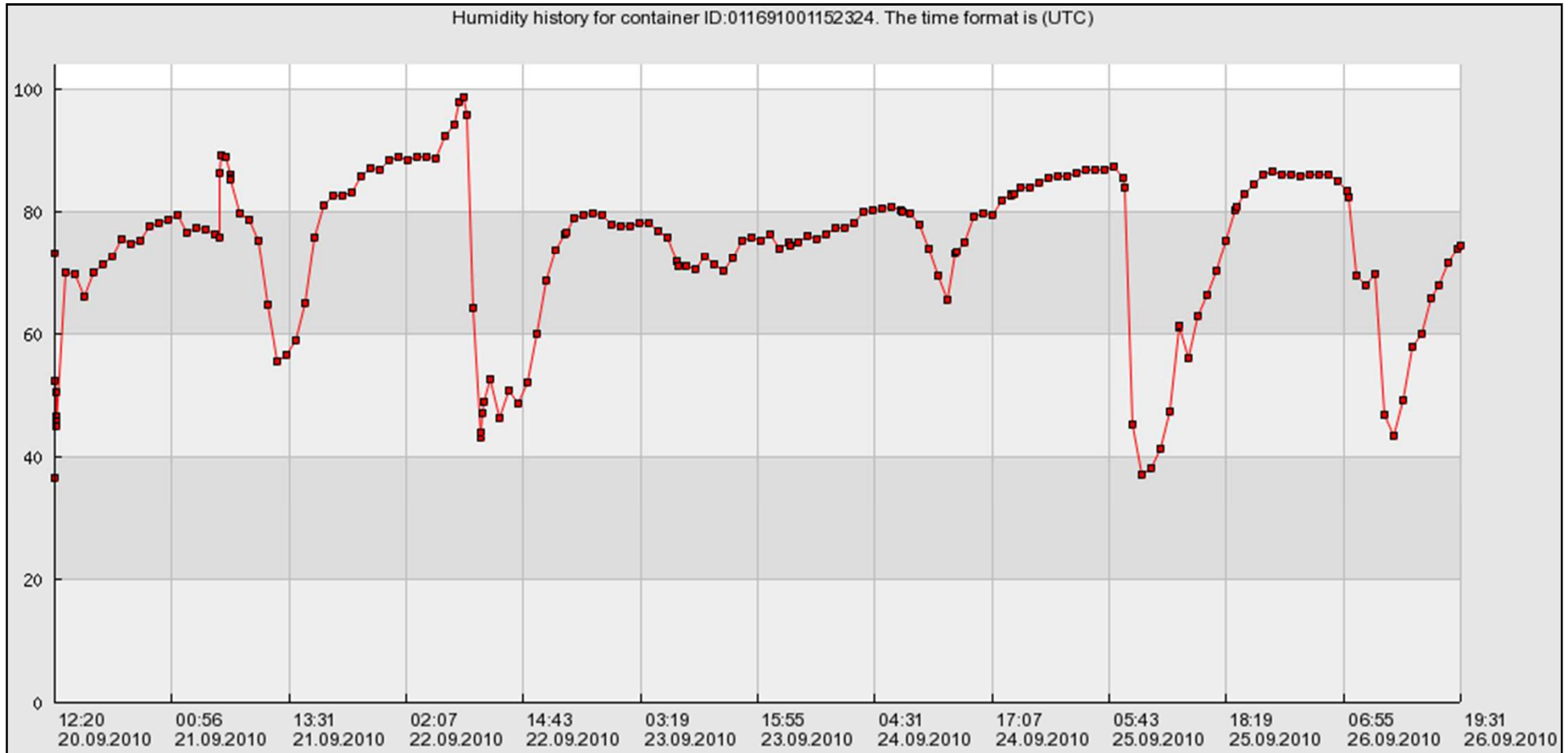
GPS route of SXXJ0004200 (5/5)



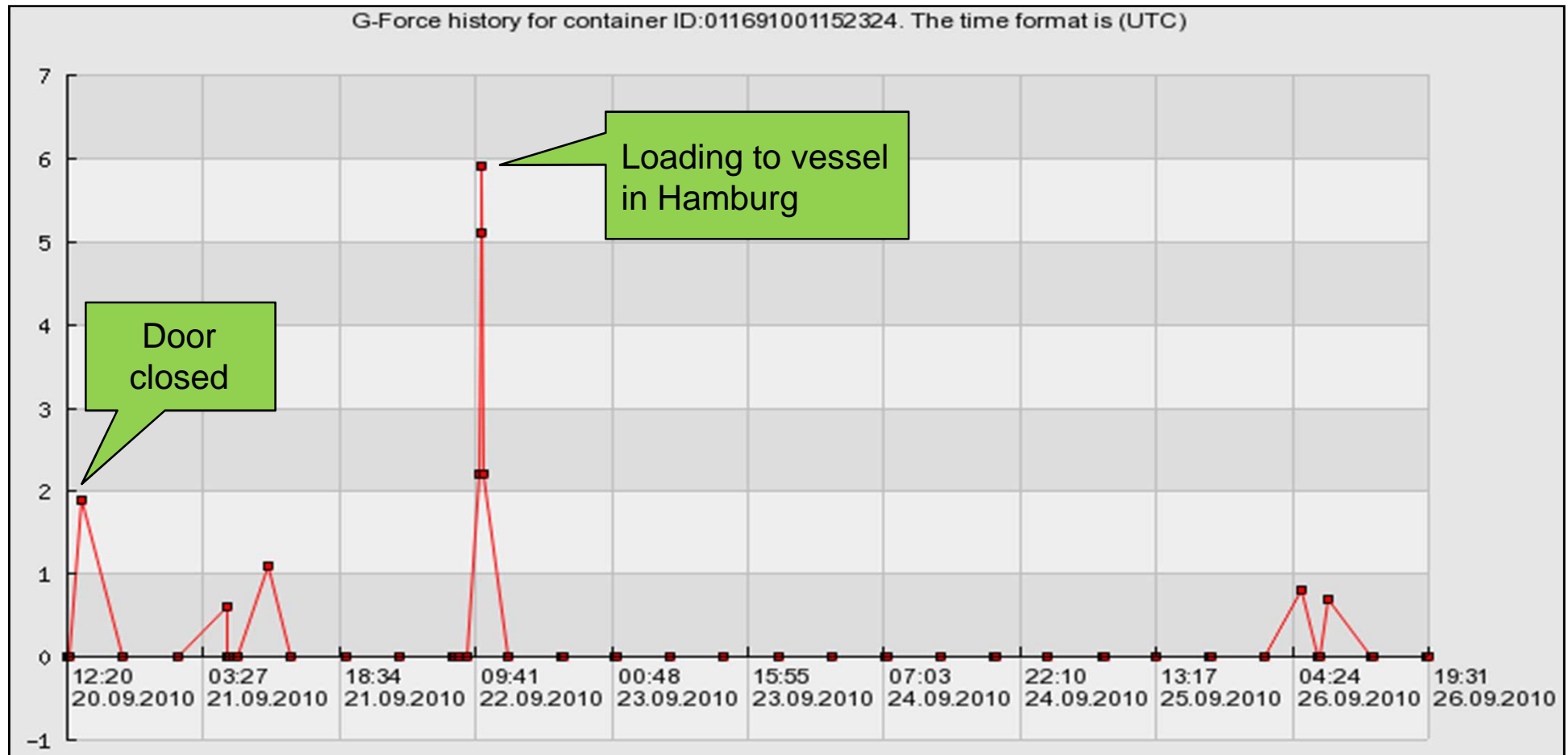
Temperature data of SXXJ0004200



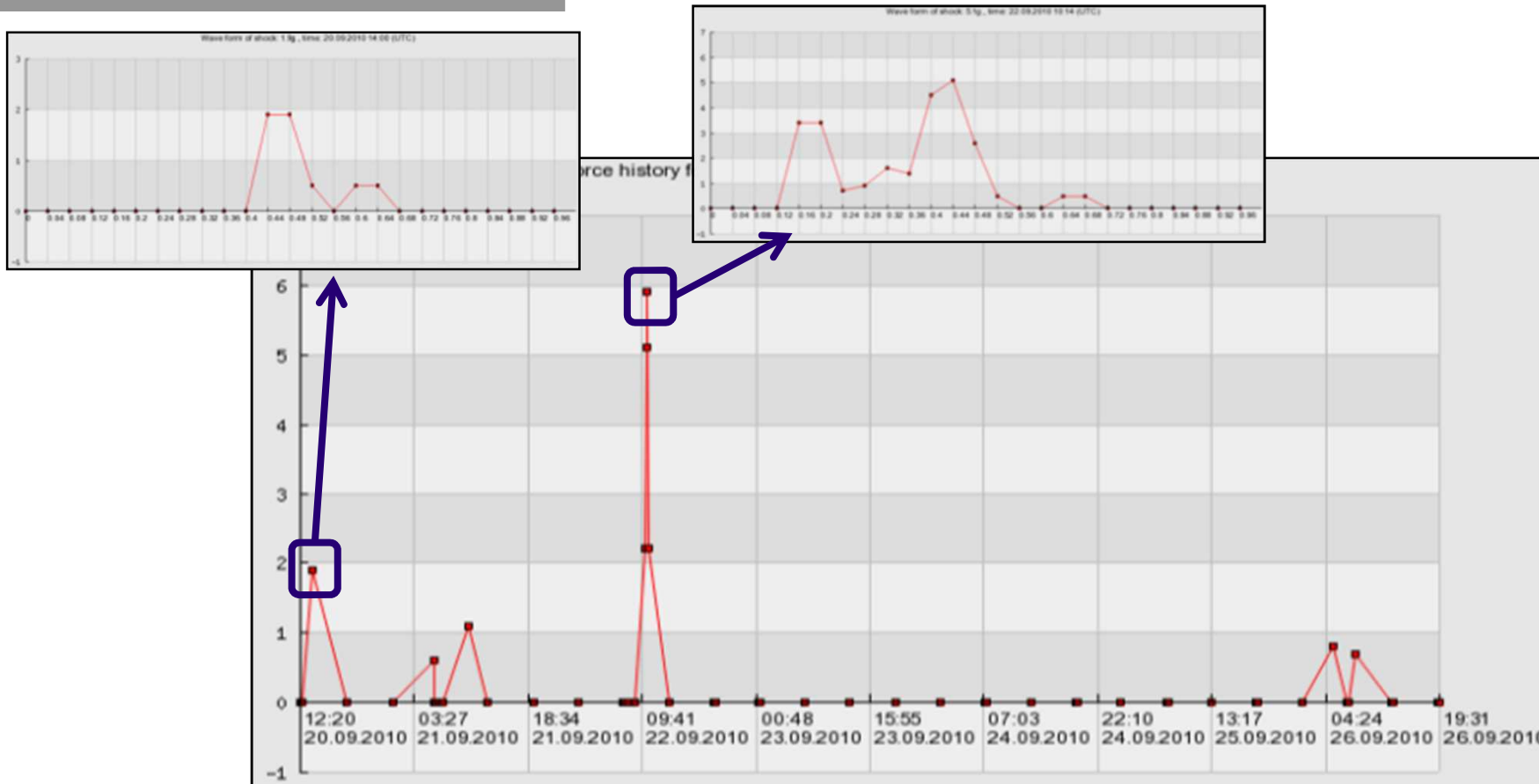
Humidity data of SXXJ0004200



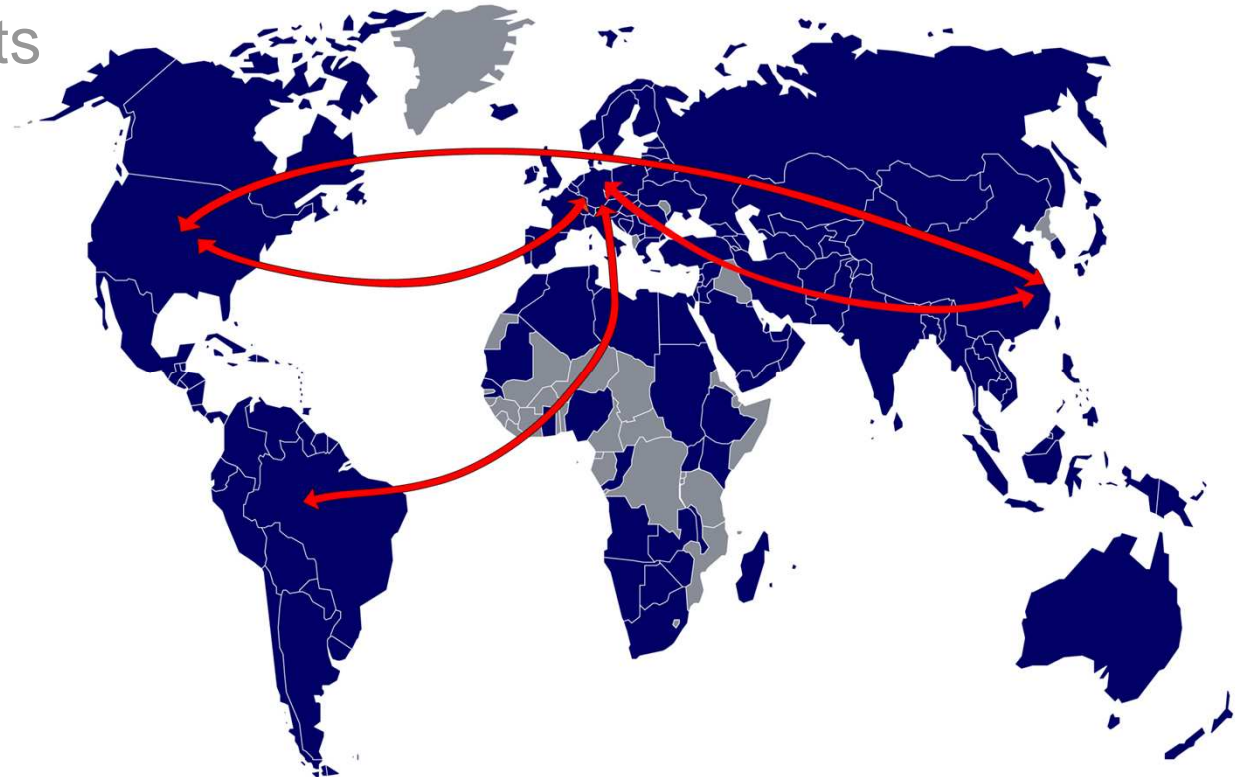
G-force data for SXXJ0004200



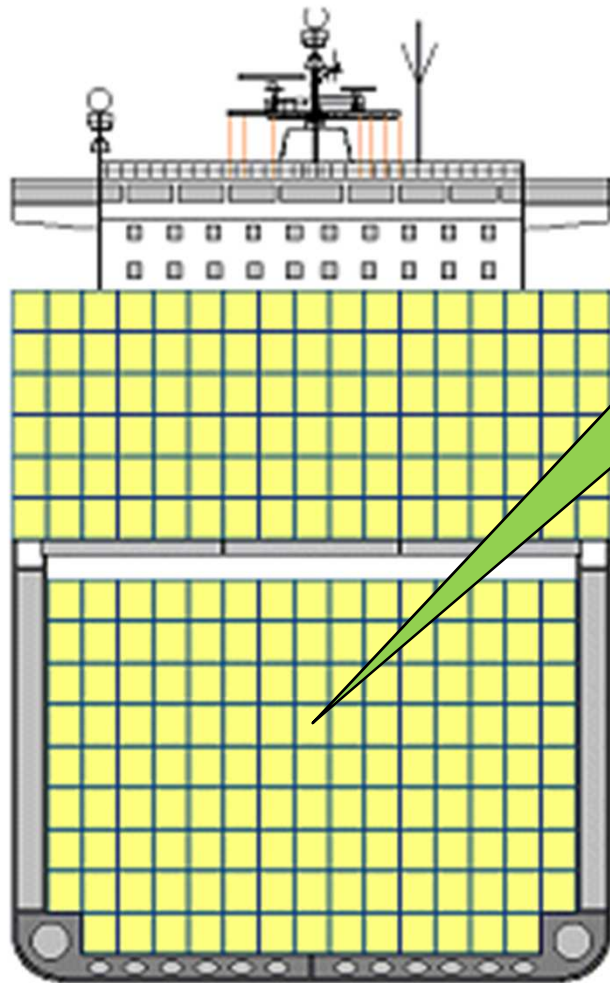
In-depth analysis of G-force waveform of impact 50 milliseconds before and 50 milliseconds after the main impacts



- Product description
- Web Application
- Sample Customer Reports
- Facts and Benefits



Possible storage position under deck leaves no view to the satellite networks for GPS data acquisition



Possible location of container on vessel – No chance to get satellite GPS data



Smartbox general functionality overview and requirements during different steps of the supply chain

	<u>GPS position</u>	<u>Security status¹⁾</u>	<u>Cargo status²⁾</u>	<u>General Requirements</u>
				<ul style="list-style-type: none"> ✓ GPS needs clear view to sky <ul style="list-style-type: none"> ○ No GPS available inside of building ○ No GPS available if container stored under deck on vessel ✓ Data transfer needs GPRS network³⁾ <ul style="list-style-type: none"> ○ No communication in open water ○ No communication in countries with no GPRS network ✓ All security and cargo status sensors are active during journey⁴⁾ <ul style="list-style-type: none"> ○ Data is stored and sent during first 12 hour update in area with available GPRS network
	Yes, if loaded in top rows			

1) Door open/closed, Light, Motion inside, Mounting

2) Temperature, Humidity, Impact/Shock, Vibration, Tilt

3) Satellite communication available upon request for data transfer at almost every point in the world incl. open sea

4) Full battery status needed

DB SCHENKER *smartbox*

Standard schedule of sensor data acquisition



Individual settings possible based on customer request



Security



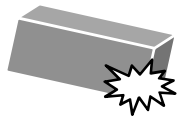
- ✓ Permanent check of door, light, motion sensors
- ✓ Status report every 12 hours



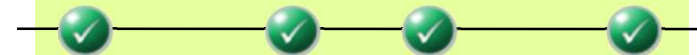
Temp./ Humidity



- ✓ Hourly recording of data
- ✓ Permanent threshold check



Impact/ Tilt/ Vibration



- ✓ Max. value recorded every 6 hours
- ✓ Permanent threshold check



GPS



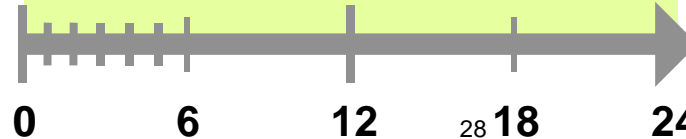
- ✓ Position determined every 6 hours and 24/7 during alert if clear view to the sky



Data transfer



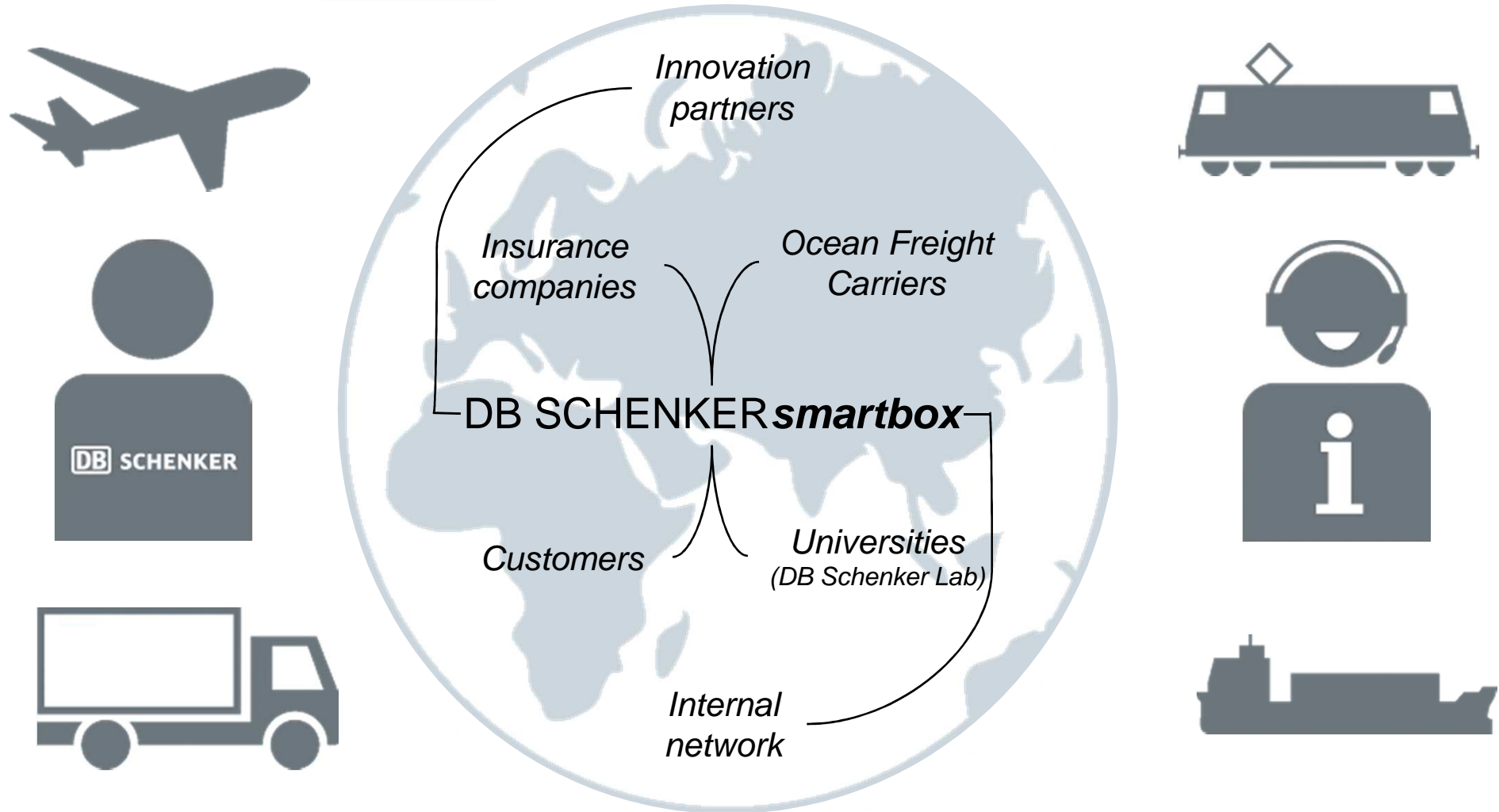
- ✓ Data transferred every 12 hours and 24/7 during alert, if GPRS network available



Time (hours)

DB SCHENKER *smartbox*

Innovative – Efficient – Secure



Transparency

- Highest level of transparency of the supply chain
- Monitoring of cargo conditions
- Increased lead time transparency
- GPS real time tracking via web (24/7...)

Savings

- Potential reduction of insurance premium
- Reduction of customer's logistics costs

Security

- Protection against theft and terror

Strategic advantages

- Increased product- & data quality
- Innovation marketing
- Enhanced strategic process planning capabilities

Strong partner

- 4 years of product development
- Excellent integration experiences
- Global network of cooperation and innovation partners
- Easy and flexible installation procedures
- Worldwide available

DB Schenker:
leader in sensor technology for ocean freight



Thank you for your attention!

Christopher Regenhardt

Corporate Product Management
Ocean Freight

Phone +49 201 8781-8243
Fax +49 201 8781-8472
Mobile +49 160 90558660
christopher.regenhardt
@dbschenker.com

Schenker AG
Alfredstrasse 81
45130 Essen / Germany
www.dbschenker.com